

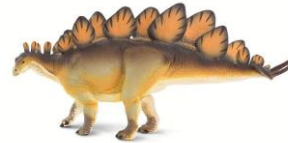
Key Facts	
Dinosaurs	Dinosaurs are prehistoric reptiles that lived over 160 million years ago, before people were alive.
How did they move?	Some dinosaurs walked on two legs, some on four and some on both. Some were speedy and some were slow.
What did they look like?	Some had thick, bumpy skin. Some had feathers. Some were amour plated, some had horns, crests, spikes or frills to defend themselves.
What happened to them?	Dinosaurs became extinct (died out) 65 million years ago, probably due to an asteroid from space hitting the earth and changing the climate (weather).



Tyrannosaurus Rex



Velociraptor



Stegosaurus



Triceratops

Vocabulary 10	
Carnivore	An animal that eats meat.
Cold blooded	Animals whose body temperature matches the temperature outside. If its hot they are hot and if it is cold they are cold. (Reptiles).
Dinosaur	A group of reptiles that lived on earth millions of years ago before people.
Extinct	None are alive now.
Fossil	The remains or a imprint of a prehistoric plant or animal embedded and preserved in rock.
Herbivore	An animal that eats plants.
Omnivore	An animal that eats meat and plants.
Paleontologist	A scientist who studies fossils.
Reptile	A cold blooded animal with dry scaly skin and lays soft shelled eggs on land.
Warm blooded	Animals that can keep a constant body temperature (mammals).



Brachiosaurus



Pterosaurs

At home:

- Look at and share information books and story books about dinosaurs.
- Make a model dinosaur out of old boxes and tubes.
- Go on a fossil hunt or have a go at making your own fossil using salt dough.
- Make a dinosaur land scape on an old tray/tin using bits from the garden, such as moss, leaves, twigs, etc.