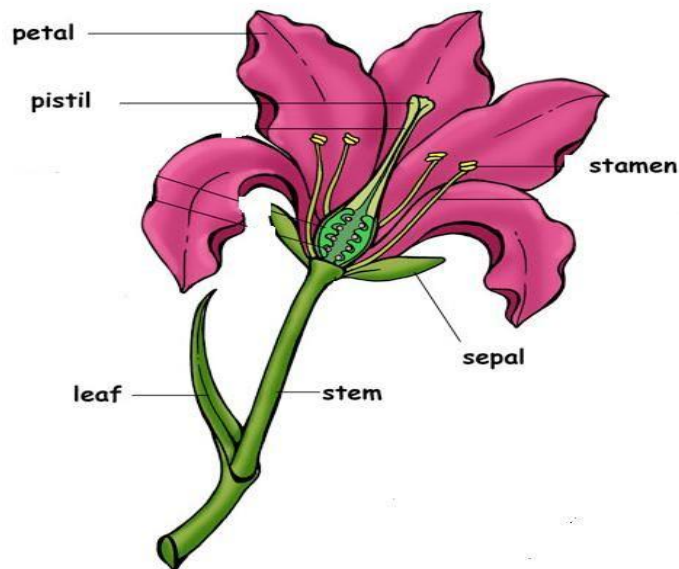
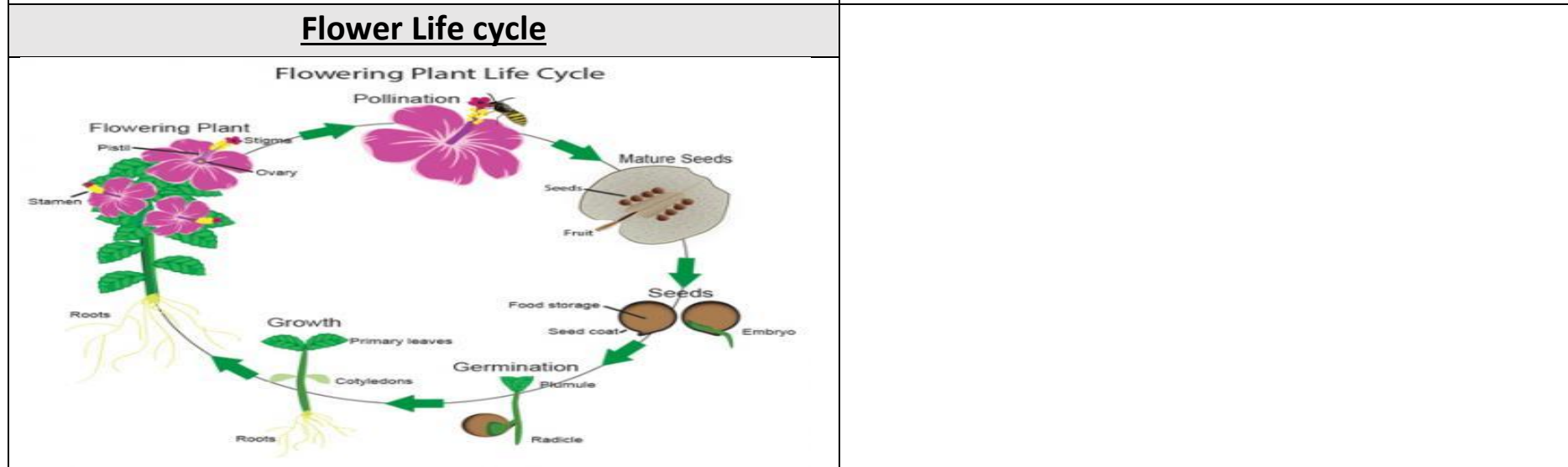
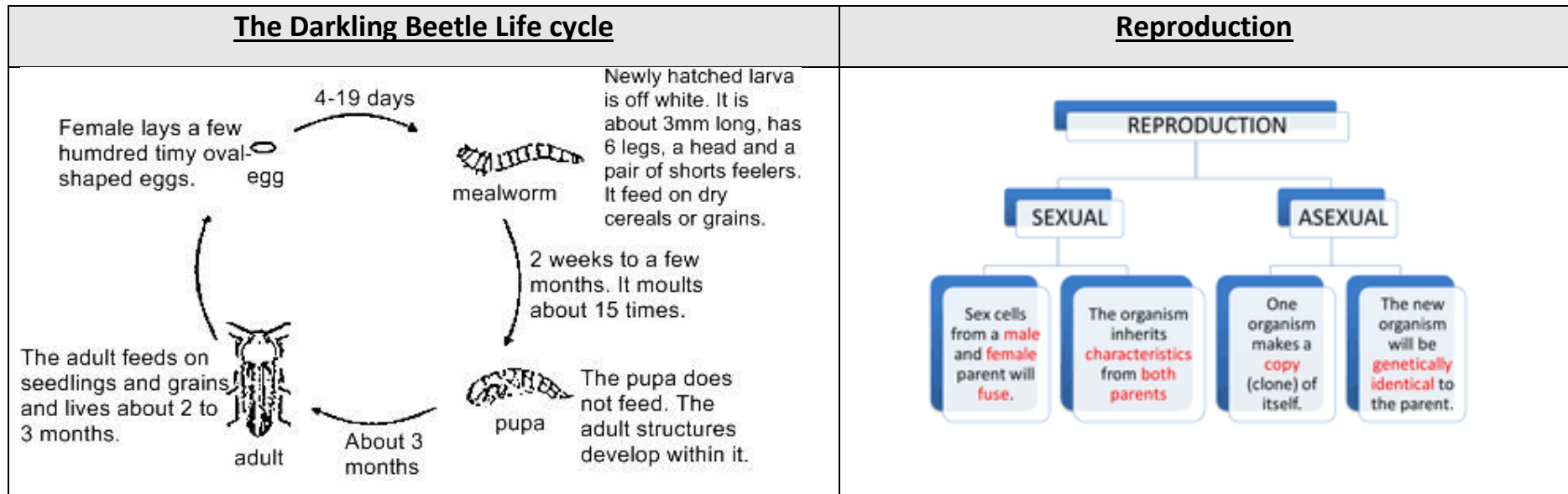


Key Facts	
The Darkling Beetle	As it grows, the darkling beetle goes through various changes, each of which is known as a metamorphosis. In these stages, the darkling beetle changes its appearance.
Plants and Trees	Plants and trees usually reproduce through seeds, but gardeners are able to grow plants from cuttings of healthy plants, creating a copy of the original.
Reproduction	Reproduction is the biological process in which new individuals are produced from their parents.
Seeds	Seeds can be spread by various means such as: by the wind, carried by animals or eaten.

Vocabulary	
Invertebrate (No-backbone)	Animals without a backbone. E.g. insects and spiders (arachnids).
Vertebrate	Animals with a backbone. E.g. Humans, fish, birds.
Exoskeleton	The protective shell on the outside of an insect.
Larva	The stage of an insects life after the egg form.
Pupa	The stage of an insect's life after the Larva form.

The Parts of the Flower





Year 5 Science

Life Cycles

Knowledge Organiser