

# St Joseph's Catholic Primary School

## Home Learning and Important information

Year group: Reception

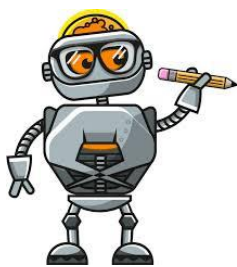
Week beg: 29<sup>th</sup> June 2026

### Important information and dates for the diary:

- Learning conversations are optional, if there is anything you would like to discuss on the report then please book a learning conversation with me.
- Forest school day at St Edmunds – 2<sup>nd</sup> July. We will be visiting our federated site, St Edmunds for the day and joining both their reception classes for forest school. The children will be outdoors all day, please ensure they are wearing wellington boots with a pair of spare trainers to change into in a separate bag. **No shorts/skirts, leggings/jogging bottoms** are ideal, due to there being stinging nettles on the site, please also make sure your child has a sunhat and a water bottle. Please ensure you have indicated whether you would like the kitchen to provide a packed lunch for your child or if you will provide one from home. Please arrive promptly at 8:40am so we can register and get the children ready for the coach.
- Sports Day – 3<sup>rd</sup> July. Gates open at 10:45am.
- OM consultants in school – 6<sup>th</sup> July. There are 1:1 parent appointments available so please contact the office if you would like to book an appointment on [admin@st-josephs.suffolk.sch.uk](mailto:admin@st-josephs.suffolk.sch.uk)

### Home learning:

- Daily reading – please ensure that you have signed your child's bookmark.
- Numbots – please engage with Numbots at least 3 times this week
- Mathletics activities – please only complete the assigned activities, other than these the children can access the games, live and Meritupia. Children collect points to earn certificates – log in details have been put in your child's reading folder.



Well done to Albie, Nico and Reuben for achieving top 3 on the NumBots leaderboard for being superstar collectors this week! It is great to see some new names!

Look out for your certificates!



This week's spellings: Unit 11 bridging /ch/ and /tch/ (same sound different spelling)

| Word  | Word split into sounds |
|-------|------------------------|
| chip  | ch/i/p                 |
| pinch | p/i/n/ch               |
| witch | w/i/tch                |

|       |         |
|-------|---------|
| pitch | p/i/tch |
| chop  | ch/o/p  |
| chin  | ch/i/n  |

\*Please note the children are not tested on spellings in reception, this is for your information. These are words we are building and reading in phonics this week, so you can practice at home.